

## Kirk Farm Club Lambs

Kirk Farm Club Lambs is located on a small farm just east of Clinton, AR, and is made up of four family members, Stacy, Lisa and Emily Kirk and Ashley Flickinger. Our start in the club lamb business was like many others, we kept our daughters' show animal. Both Ashley and Emily showed lambs, but it wasn't until 2016 that we couldn't part with our Pennsylvania ewe lamb, Mae. She was just special to us so we decided to get her bred.

In 2018 Mae delivered our first lambs, which were two ewe lambs. Today we run just a little less than thirty ewes and plan to top out between thirty-five and forty. We have utilized AI to upgrade our quality and genetics, and have clean up bucks out of the following genetics; Hell on Wheels x Impact, Going Commando x Hell on Wheels and Collusion x On Tap. We did not grow up raising sheep so the learning curve has been very steep, and sometimes looks like it's still straight up, but we all work hard together and strive to be better than the year before. Over the few years we have been raising lambs, we have established many wonderful relationships and watched many young people develop skills and confidence with their lamb as the year progresses. There's nothing sweeter in our eyes than to see a smile of a young person when they realize their hard work and dedication has paid off.

When we told Ashley that we were supposed to provide pictures to use and we were going to put the one of her 2006 VBC Grand Champion market lamb on there, she laughed and said "well hopefully everyone can see how much we have progressed". We have been blessed beyond imagination with getting to watch our kids show lambs and other animals. The pictures are wonderful but the memories are priceless.

This year we have decided to put a small number of our lambs on a SC Online sale April 12th, and the remainder will be available at our bid board auction April 30th at the farm. All of our lambs are eligible for the Arkansas Bred Lamb program. We invite anyone interested in lambs to come by prior to the auction and see if anything we have will work for them.

### Kirk Farm Club Lambs

321 Peel Road

Clinton, AR 72031

Stacy Kirk (501) 745-1042 [kirkfarm@yahoo.com](mailto:kirkfarm@yahoo.com)

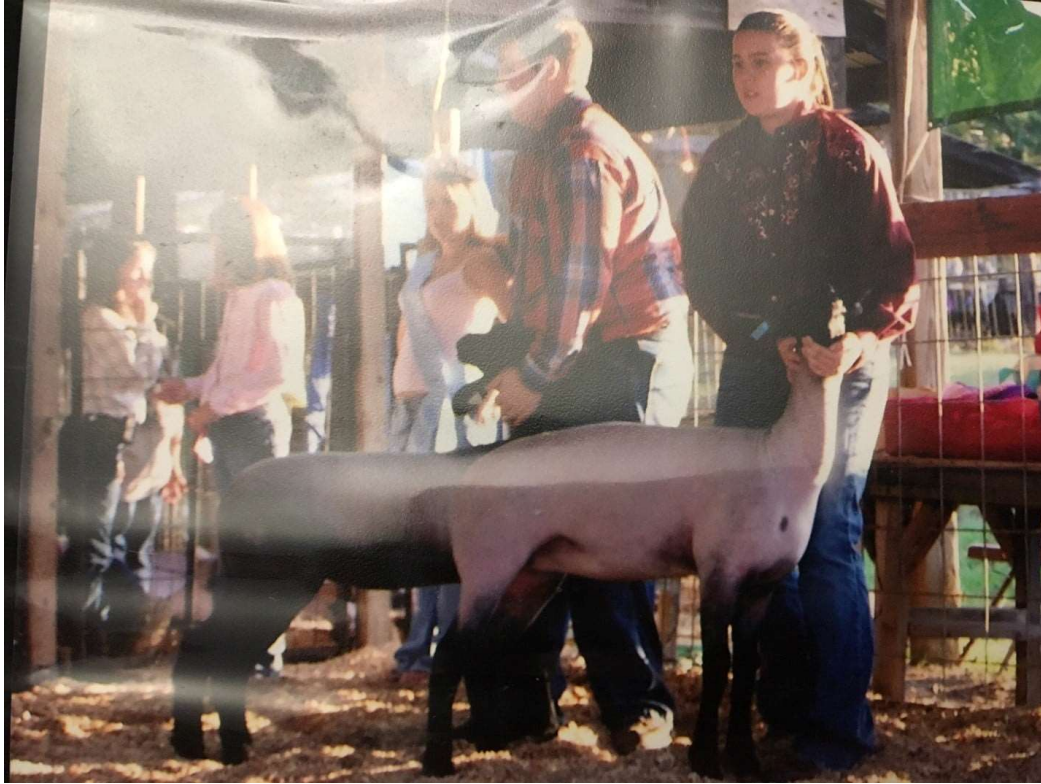
Lisa Kirk (501) 745-1255 [lisa.kirk584@gmail.com](mailto:lisa.kirk584@gmail.com)

Emily Kirk (501) 757-0411 [emilykirk4@icloud.com](mailto:emilykirk4@icloud.com)

Ashley Flickinger (501) 745-1458 [ashley.flickingerwls@gmail.com](mailto:ashley.flickingerwls@gmail.com)

2020 Photo of Kirk Farm  
lambs grazing clover.





2006 Photo of Ashley showing her ewe "Lamb Chops".

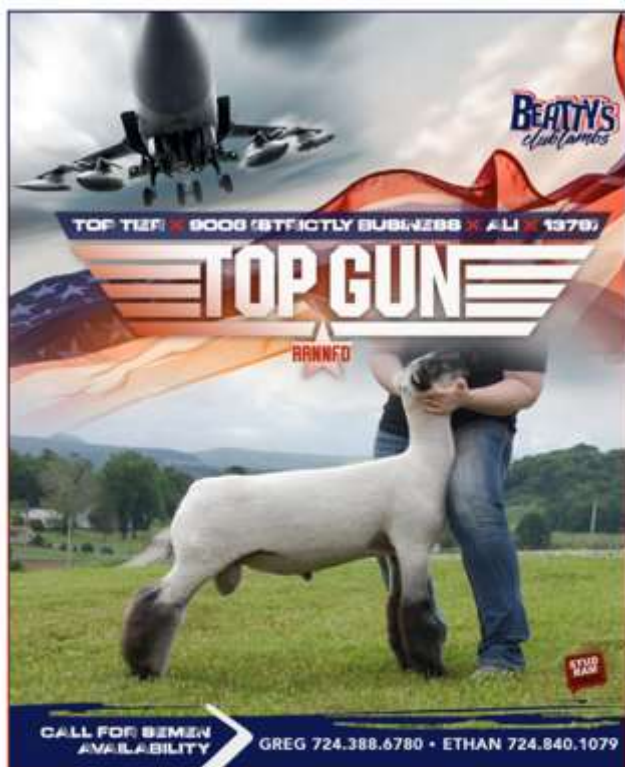


2016 Photo of Emily showing Mae at the ASF, being helped by her nephew Karson "Korndog" Flickinger.



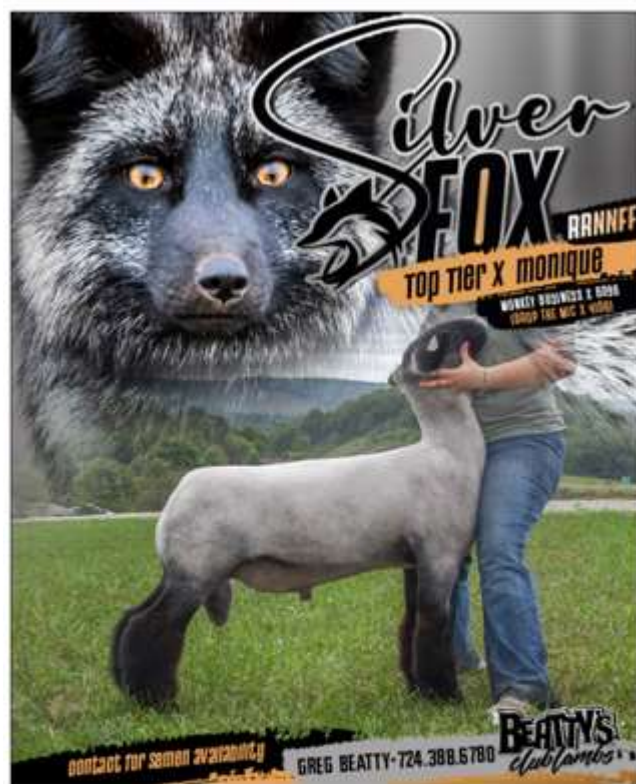


2021 Photo of Emily showing a Kirk Farm wether for the last time at MS Youth Expo.



Top Gun

2022 lamb crop sires



Silver Fox